

DLIC



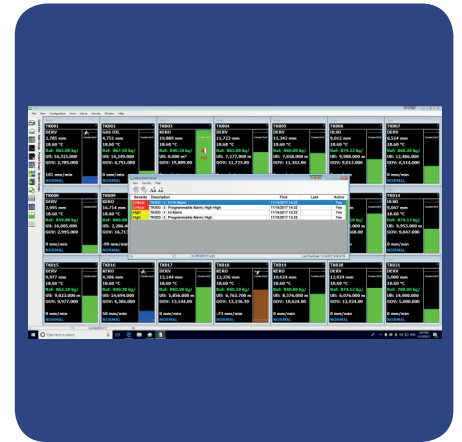
A Data Loop Interface Converter used to interface a PC to any device that communicates using a 20mA digital current loop.



DLIC, Rack Mount



DLIC, Desktop



VTW

Overview

The DLIC is an RS-232 / RS-485 to 20mA Digital Current Loop Converter which can be used to interface a PC to any device that communicates using a 20mA digital current loop.

The device provides 16 independent channels in a single 19" rack mount enclosure.

The DLIC is also available in a desktop version when fewer channels are required.

In the desktop version, a small panel meter is provided to indicate the Loop Current. A switch allows the panel meter to be connected to either loop. The panel meter is a useful aid to the commissioning engineer when setting the loop current.

Each serial channel has two LEDs representing transmit and receive data. In addition, each channel has a potentiometer for the adjustment of loop voltage/current.

Typical application

The DLIC is often used to interface with the Whessoe[®] Varc[®] range of level gauges and transmitters that use digital current loop data transmission.

Typically, a PC running a tank inventory management application such as VTW would be connected to the current loop as illustrated below.

Key features

- Each channel can operate in active or passive mode whereby the power is sourced from the DLIC channel or externally, respectively.
- Each RS-232 connection to the DLIC is via a 9-way D-Type female connector.
- In RS-232 mode each channel can also support redundancy.
- Each Current Loop connection is provided by a 'D' style screw terminal connector.
- The DLIC is available in a 2 channel desk mount or standard 16 channel 19" rack mount enclosure.

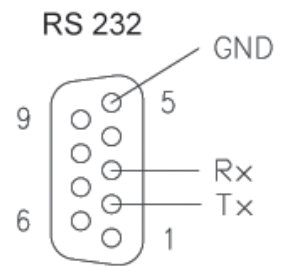
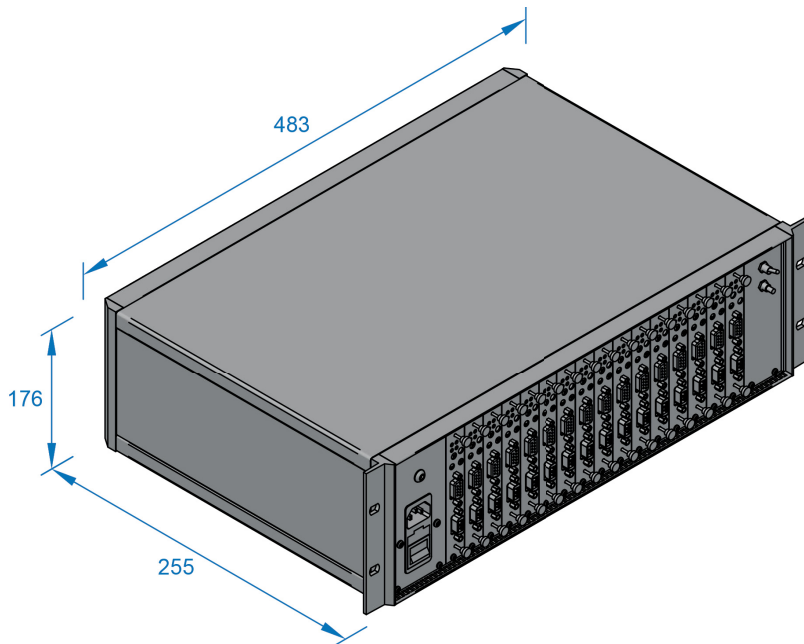


Technical Specifications:

Power:	220 - 250 Vac 50 - 60 Hz 25 VA 0.375 A max
Loop current:	20mA nominal
Channels:	2 - 16 independent channels 20 mA Digital Current Loop RS-232 / RS-485
Operating temperature:	-20 °C to +55 °C
Storage temperature:	-40 °C to +85 °C
Outputs:	Audible relay alarm
Baud rate:	150 min 9600 max

Terminations:	Screw terminals 2.5 mm ² capacity
Enclosure:	Aluminium alloy Painted RAL 7035 grey epoxy 19" Rack 3U
External dimensions:	Desktop: 225 x 155 x 55 mm Rack Mount: 483 x 255 x 176 mm
Fixings:	Standard M8 19" rack fixings
Weight:	Desktop: 2 kg Rack Mount: 6 kg

External dimensions:



Current Loop

